



Highlights

Wonderware Intelligence is a tool that allows you to access, aggregate, contextualize (provide relationships) and visualize your plant data, whether it is from Wonderware or other sources.

Intelligence offers:

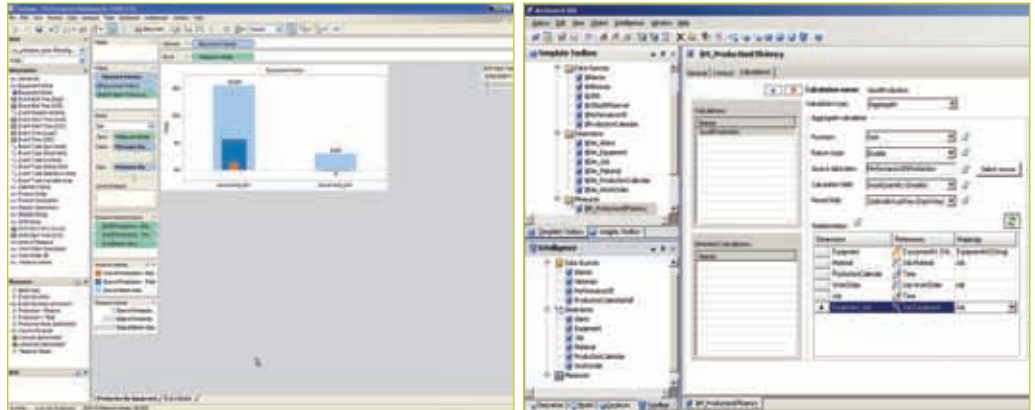
- Visualization through an easy to configure dashboard
- Data structure through a comprehensive Information Model
- Ability to create Key Performance Indicators to mirror your information needs
- Collaborate & share metrics through a web-based dashboard

Wonderware Intelligence 1.0

INTRODUCING WONDERWARE INTELLIGENCE

Wonderware Intelligence is the industry's first EMI (Enterprise Manufacturing Intelligence) product that leverages the Wonderware suite of Reporting and Analysis products. Built on top of Wonderware System Platform, Wonderware Intelligence creates an information framework to take both Wonderware and non-Wonderware data sources (such as an OSIsoft PI Server database or SAP ERP data), format, store, and present that data in an intuitive dashboard, allowing you to make immediate decisions on your plant's performance. Data is updated according to your needs, to provide you with a current view of plant asset utilization; product quality and yields; throughput; or labor, resource, and energy consumption.

Wonderware Intelligence's plant model is easy to create, using the Wonderware System Platform development environment to model both historical and transactional data, set up the relationships and the information structure.



CREATE METRICS THAT MAKE SENSE FOR YOUR BUSINESS

Wonderware Intelligence creates PERSONALIZED Key Performance Indicators, allowing you to view the metrics that are important to you to determine plant performance or adherence to operating goals. Use Wonderware Intelligence to determine uptime over plants, by specific lines, shifts and personnel. Look at quality plant by plant. Perform ad-hoc analysis of any data that is stored in any of your plant applications, whether it's in a historian, MES, LIMS, or SAP ERP system. These analyses are published in a dashboard format, using the Intelligence Analytics Client, allowing you to share your findings over the web for greater collaboration.

Wonderware Intelligence's plant model is easy to create, using the Wonderware System Platform development environment to model both historical and transactional data, set up the relationships and the information structure.

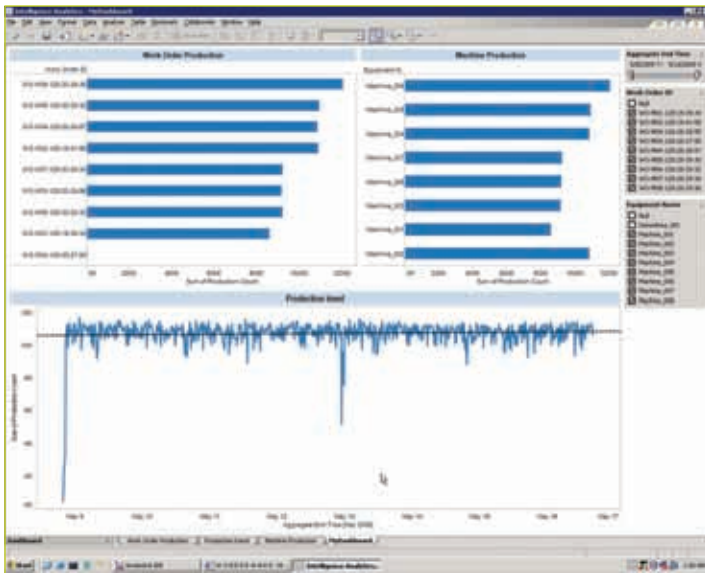
SELF-SERVICE PRODUCT

Wonderware Intelligence has been designed so that the process or plant engineer can quickly develop and publish to the web their own dashboard views of KPI's, using existing data from your plant, quality, and enterprise applications. This not only saves valuable IT resource time and costs, but provides a collaboration framework for you to further leverage the investments you have in these solutions, not replacing, but supplementing with an overlay for more transparency to your operations.

WORKS WITH YOUR PRODUCTS

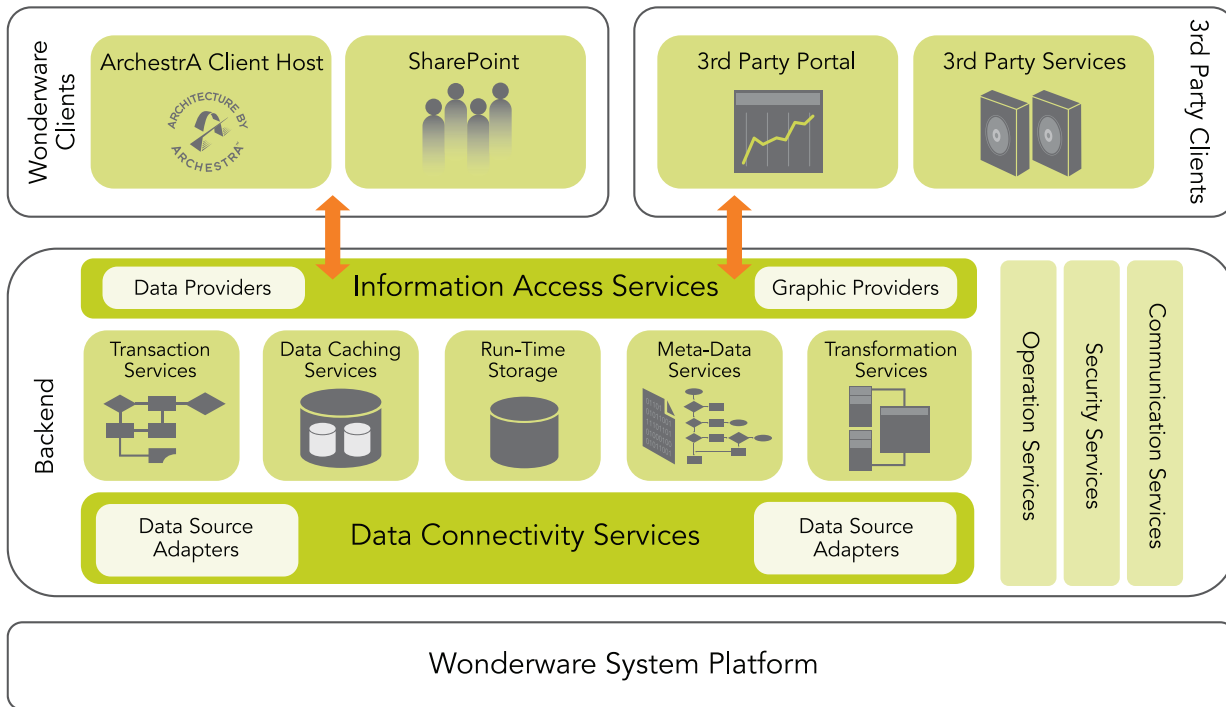
Unlock the data in your existing applications, and share it company-wide! Wonderware Intelligence provides a framework for easy data access and visualization, comparing important metrics such as quality by shift, yields by line, or other parameters that are key to your performance.

Intelligence can be used with Wonderware products, including InBatch, InTouch, Wonderware MES (Operations and Performance), and Energy Management for a single view of your plant wide process data. Utilize existing Wonderware Reporting Products—HMI Reports, ActiveFactory, ArchestrA Reports, and Wonderware Information Server by viewing this source data as when drilling down into dashboard reports to determine cause and effect relationships.



FOR ANY INDUSTRY, ANY TYPE OF DATA

Wonderware Intelligence is a tool that can be used in any industry—whether you are in food & beverage, primary metals, chemical, oil and gas, or energy. It accesses the data you need to manage your business, whether that data comes from your Wonderware system, ERP, LIMS, or other enterprise or legacy application.



INTELLIGENCE COMPONENTS

Wonderware Intelligence is a natural extension to Wonderware's full-featured reporting and analysis product portfolio. There are three components of the Wonderware Intelligence product:

- Server, creating the information model and doing persistent data storage
- Standard Client, for viewing web-based dashboards, as well as reports from Wonderware ActiveFactory or Wonderware Information Server
- Analytics Client, creating and publishing dashboards that provide real-time analytical capabilities on Intelligence-gathered data.

INTELLIGENCE SERVER

The Intelligence Server provides core Intelligence functionality, with its contextualization of data sources into an Information Model. The Intelligence Server is scalable, from a single site/single server to multiple servers for hosting data from multiple sites. The Intelligence Server can aggregate data from other servers, and compare data across sites. You can establish a hierarchical data structure for aggregating multiple databases into one data store.

INTELLIGENCE CLIENTS

Wonderware Intelligence Standard Client

Intelligence Standard Clients provide viewing access to published Dashboards, and allow the user to browse and navigate the Intelligence content. The Standard Clients employ "one click" technology for ease of use in deployment.

Wonderware Intelligence Analytics Client

Intelligence Analytics Clients enable a user to analyze data, and create and publish rich, intuitive Dashboards that feature drill-down capabilities for root-cause analysis. The Analytics Clients can configure reports and dashboards that encompass existing Wonderware Reporting Content from Information Server, Active Factory, or ArchestrA reports.



TECHNICAL SPECIFICATIONS

Wonderware Intelligence supports the following OS languages: Server: English, French, German, Simplified Chinese, Japanese; Clients: Analytics Client–English only; Standard Intelligence Client: English, French, German, Simplified Chinese and Japanese.

OPERATING SYSTEMS

Wonderware Intelligence Server supports Windows XP, SP3 (single node, 32 bit); Windows 2003 SP2 (32 bit only); Windows 2003 R2 SP2 (32 bit only); Vista SP2 Ultimate (both 32-and 64-bit, single node); Vista SP2 Business (both 32-and 64-bit, single node); Windows 2008 Server SP2 - Standard and Enterprise (both 32-and 64-bit); Windows 2008 Server R2 SP2 - Standard and Enterprise (both 32-and 64-bit); Windows 7 Professional (both 32- and 64-bit, single node) and Windows 7 Ultimate (both 32- and 64-bit, single node).

Wonderware Intelligence Server supports Microsoft SQL Server 2008 with SP1: Express, Standard, and Enterprise editions, 32-bit and 64-bit versions.

Wonderware Intelligence Clients support Windows XP, SP3 (32- bit); Windows 2003 SP2 (32 bit only); Windows 2003 R2 SP2 (32 bit only); Vista SP2 Ultimate (both 32- and 64-bit); Vista SP2 Business (both 32- and 64-bit); Windows 2008 Server SP2 - Standard and Enterprise (both 32- and 64-bit); Windows 2008 Server R2 SP2 - Standard and Enterprise (both 32- and 64-bit); Windows 7 Professional (both 32- and 64-bit) and Windows 7 Ultimate (both 32- and 64-bit).

LOOK TO WONDERWARE TO MAKE EMI AS EASY AS HMI

Wonderware Intelligence is the latest in the family of operations management solutions from Invensys, providing you with software to help you gain more out of your existing assets and resources. We unlock the value of your existing data to make Enterprise Manufacturing Intelligence easy, scalable, and with fast time to benefits.

WW_datasheet_Intelligence_en_1210



www.wonderware.fi

Helsinki
tel. +358 9 540 4940
automation@klinkmann.fi

St. Petersburg
tel. +7 812 327 3752
info@wonderware.ru

Moscow
tel. +7 495 641 1616
info@wonderware.ru

Yekaterinburg
tel. +7 343 376 5393
info@wonderware.ru

Samara
tel. +7 846 273 95 85
info@wonderware.ru

Kiev
tel. +38 044 495 33 40
info@wonderware.com.ua

Riga
tel. +371 6738 1617
info@wonderware.lv

Vilnius
tel. +370 5 215 1646
info@wonderware.lt

Tallinn
tel. +372 668 4500
info@wonderware.ee

Minsk
tel. +375 17 200 0876
info@wonderware.by